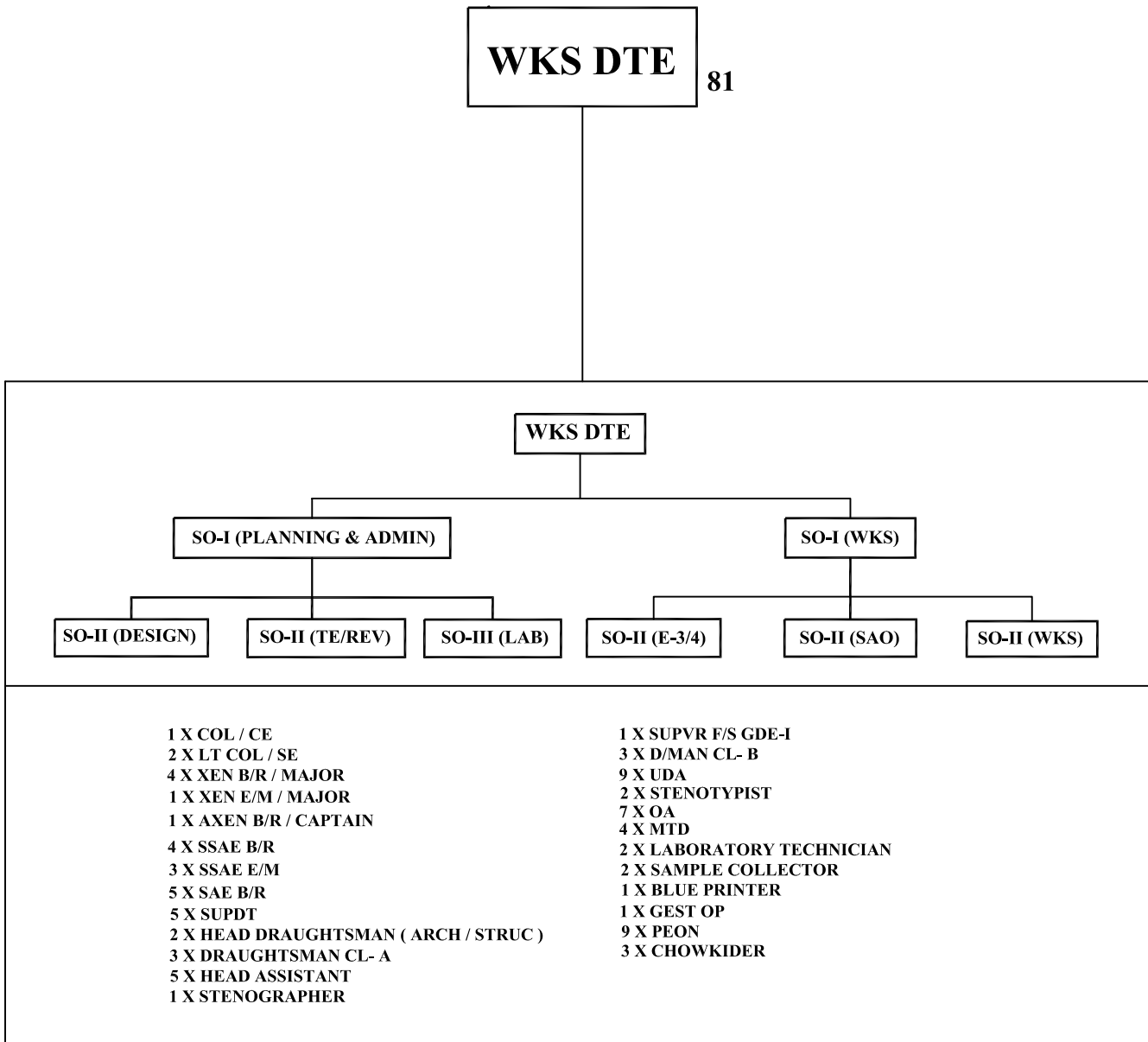


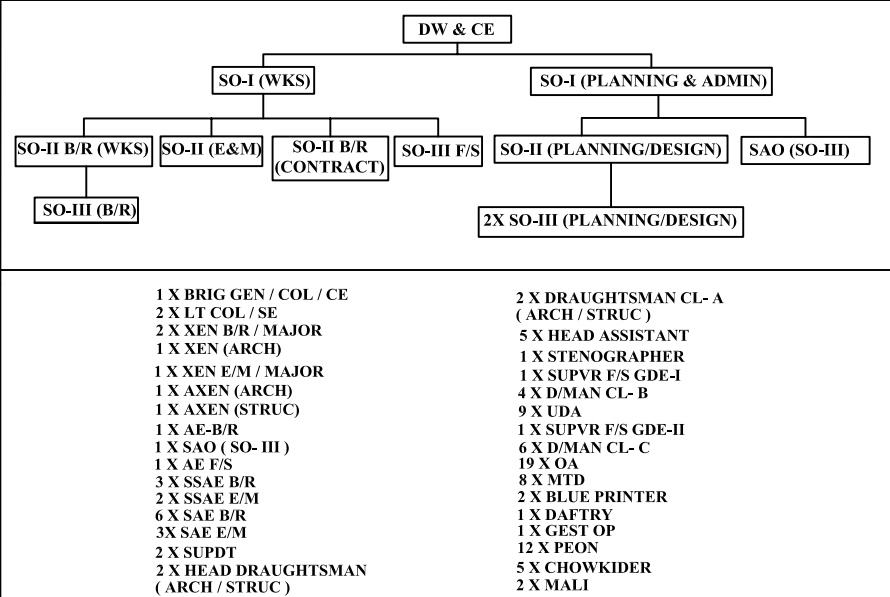
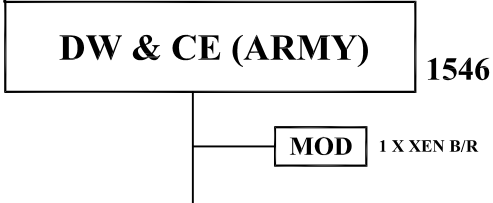
MES ORGANIZATION (WKS DTE)



RANK STATUS

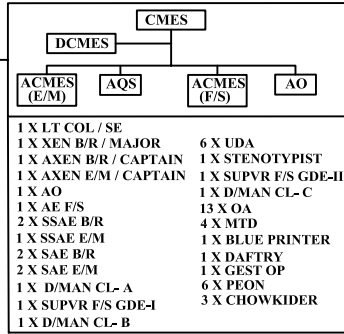
<ul style="list-style-type: none"> 1 X COL / CE 2 X LT COL / SE 4 X EXECUTIVE ENGINEER B/R / MAJOR 1 X EXECUTIVE ENGINEER E/M / MAJOR 1 X ASSISTANT EXECUTIVE ENGINEER B/R / CAPTAIN 4 X SENIOR SUB ASSISTANT ENGINEER B/R 3 X SENIOR SUB ASSISTANT ENGINEER E/M 5 X SUB ASSISTANT ENGINEER B/R 5 X SUPERINTENDENT 2 X HEAD DRAUGHTSMAN (ARCH / STRUC) 3 X DRAUGHTSMAN CLASS- A 5 X HEAD ASSISTANT 1 X STENOGRAPHER <hr/> <p>37</p>	<ul style="list-style-type: none"> 1 X SUPERVISOR F/S GDE- I 3 X DRAUGHTSMAN CLASS- B 9 X UPPER DIVISION ASSISTANT (U D A) 2 X STENOTYPIST 7 X OFFICE ASSISTANT (OA) 4 X MECHANICAL TRANSPORT DRIVER (MTD) 2 X LABORATORY TECHNICIAN 2 X SAMPLE COLLECTOR 1 X BLUE PRINTER 1 X GESTETNER OPERATOR 9 X PEON 3 X CHOWKIDER <hr/> <p>44</p> <hr/> <p>+ 37</p> <hr/> <p>81</p>
--	--

MES ORGANIZATION (ARMY)



RANK STATUS	
1 X BRIG GEN / COL / CE	1 X STENOGRAPHER
6 X LT COL / SE	29 X SUPVR F/S GDE-I
1 X XEN B/R (MOD)	32 X D/MAN CLASS-B
1 X XEN E/M	142 X U D A
19 X XEN B/R / MAJOR	4 X STENOYPIST
12 X CAPT	25 X SUPVR F/S GDE-II
1 X XEN (ARCH/STRUC)	21 X D/MAN CLASS-C
13 X AXEN B/R	6 X AXEN E/M
6 X AXEN E/M	1 X AXEN (ARCH)
1 X AXEN (ARCH)	86 X STOREMAN
1 X AXEN (STRUC)	291 X OA
17 X AE B/R	97 X MTD
6 X AE E/M	30 X BLUE PRINTER
1 X SAO	29 X DAFTRY
4 X AO	5 X GEST OP
5 X AE F/S	104 X PEON
92 X SSAE B/R	88 X CHOWKIDER
51 X SSAE E/M	2 X MALI
170 X SAE B/R	2 X SWEEPER
135 X SAE E/M	
2 X SUPDT	1546
2 X HD DTMN	
6 X D/MAN CLASS-A	
5 X HD ASST	

109



GE (ARMY) PROJ DHAKA

64

1 X XEN B/R / MAJOR	1 X SUPVR F/S GDE-II
1 X AXEN B/R / CAPTAIN	2 X D/MAN CL- C
2 X AE-B/R (SDO)	4 X STOREMAN
4 X SSAE B/R	12 X OA
2 X SSAE E/M	2 X MTD
12 X SAE B/R	1 X BLUE PRINTER
5 X SAE E/M	1 X DAFTRY
1 X SUPVR F/S GDE-I	4 X PEON
1 X D/MAN CL- B	3 X CHOWKIDER
5 X UDA	

GE (ARMY) MAINT NORTH

49

1 X XEN B/R / MAJOR	4 X UDA
1 X AXEN E/M / CAPTAIN	1 X SUPVR F/S GDE-II
3 X SSAE B/R	3 X STOREMAN
4 X SSAE E/M	6 X OA
5 X SAE B/R	1 X BLUE PRINTER
8 X SAE E/M	5 X MTD
1 X SUPVR F/S GDE-I	1 X DAFTRY
1 X D/MAN CL- B	2 X PEON
	2 X CHOWKIDER

GE (ARMY) MAINT SOUTH

52

1 X XEN B/R / MAJOR	4 X UDA
1 X AXEN B/R / CAPTAIN	1 X SUPVR F/S GDE-II
4 X SSAE B/R	3 X STOREMAN
4 X SSAE E/M	7 X OA
6 X SAE B/R	5 X MTD
8 X SAE E/M	1 X BLUE PRINTER
1 X SUPVR F/S GDE-I	1 X DAFTRY
1 X D/MAN CL- B	2 X PEON
	2 X CHOWKIDER

AGE (ARMY) MIRPUR
(SANCTION AS AGE)

38

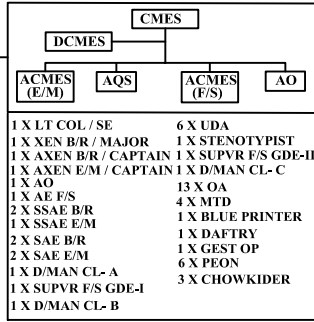
1 X AXEN B/R / CAPTAIN	4 X UDA
1 X AE-B/R	3 X STOREMAN
3 X SSAE B/R	6 X OA
1 X SSAE E/M	2 X MTD
4 X SAE B/R	1 X BLUE PRINTER
4 X SAE E/M	1 X DAFTRY
1 X SUPVR F/S GDE-I	2 X PEON
1 X D/MAN CL- B	3 X CHOWKIDER

AGE (ARMY) JALALABAD
(SANCTION AS AGE)

38

1 X AXEN B/R / CAPTAIN	4 X UDA
1 X AE-B/R	3 X STOREMAN
3 X SSAE B/R	6 X OA
1 X SSAE E/M	2 X MTD
4 X SAE B/R	1 X BLUE PRINTER
4 X SAE E/M	1 X DAFTRY
1 X SUPVR F/S GDE-I	2 X PEON
1 X D/MAN CL- B	3 X CHOWKIDER

CMES (ARMY) CHITTAGONG 54



GE (ARMY) CHITTAGONG 66

1 X XEN B/R / MAJOR	2 X SUPVR F/S GDE-II
1 X AXEN E/M / CAPTAIN	1 X D/MAN CL- C
1 X AE-B/R (SDO)	4 X STOREMAN
4 X SSAE B/R	13 X OA
3 X SSAE E/M	4 X MTD
9 X SAE B/R	1 X BLUE PRINTER
7 X SAE E/M	1 X DAFTRY
1 X SUPVR F/S GDE-I	4 X PEON
1 X D/MAN CL- B	3 X CHOWKIDER
5 X UDA	

GE (ARMY) COMILLA 66

1 X XEN B/R / MAJOR	2 X SUPVR F/S GDE-II
1 X AXEN B/R / CAPTAIN	1 X D/MAN CL- C
1 X AE-B/R (SDO)	4 X STOREMAN
4 X SSAE B/R	13 X OA
3 X SSAE E/M	4 X MTD
9 X SAE B/R	1 X BLUE PRINTER
7 X SAE E/M	1 X DAFTRY
1 X SUPVR F/S GDE-I	4 X PEON
1 X D/MAN CL- B	3 X CHOWKIDER
5 X UDA	

AGE (ARMY) HALISHAHAR 38

1 X AXEN B/R / CAPTAIN	4 X UDA
1 X AE-B/R (SDO)	3 X STOREMAN
3 X SSAE B/R	6 X OA
1 X SSAE E/M	2 X MTD
4 X SAE B/R	1 X BLUE PRINTER
4 X SAE E/M	1 X DAFTRY
1 X SUPVR F/S GDE-I	2 X PEON
1 X D/MAN CL- B	3 X CHOWKIDER

AGE (ARMY) BHATIARY 38

1 X AXEN B/R / CAPTAIN	4 X UDA
1 X AE-B/R (SDO)	3 X STOREMAN
3 X SSAE B/R	6 X OA
1 X SSAE E/M	2 X MTD
4 X SAE B/R	1 X BLUE PRINTER
4 X SAE E/M	1 X DAFTRY
1 X SUPVR F/S GDE-I	2 X PEON
1 X D/MAN CL- B	3 X CHOWKIDER

AGE (ARMY) KHAGRACHARI 46

1 X AXEN B/R / CAPTAIN	5 X UDA
1 X AE-B/R (SDO)	4 X STOREMAN
3 X SSAE B/R	9 X OA
1 X SSAE E/M	3 X MTD
6 X SAE B/R	1 X BLUE PRINTER
4 X SAE E/M	1 X DAFTRY
1 X SUPVR F/S GDE-I	2 X PEON
1 X D/MAN CL- B	3 X CHOWKIDER

AGE (ARMY) BANDARBAN 46

1 X AXEN B/R / CAPTAIN	5 X UDA
1 X AE-B/R (SDO)	4 X STOREMAN
3 X SSAE B/R	9 X OA
1 X SSAE E/M	3 X MTD
6 X SAE B/R	1 X BLUE PRINTER
4 X SAE E/M	1 X DAFTRY
1 X SUPVR F/S GDE-I	2 X PEON
1 X D/MAN CL- B	3 X CHOWKIDER

AGE (ARMY) RANGAMATI 46

1 X AXEN B/R / CAPTAIN	4 X STOREMAN
1 X AE-B/R (SDO)	9 X OA
3 X SSAE B/R	3 X MTD
1 X SSAE E/M	1 X BLUE PRINTER
6 X SAE B/R	1 X DAFTRY
4 X SAE E/M	2 X PEON
1 X SUPVR F/S GDE-I	3 X CHOWKIDER
1 X D/MAN CL- B	
5 X UDA	

AGE (ARMY) FENI (ADHOC)

CMES	
DCMES	
ACMES (E/M)	AQS
ACMES (F/S)	AO
1 X LT COL / SE	6 X UDA
1 X XEN B/R / MAJOR	1 X STENOTYPYST
1 X AXEN B/R / CAPTAIN	1 X SUPVR F/S GDE-II
1 X AXEN E/M / CAPTAIN	1 X D/MAN CL- C
1 X AO	13 X OA
1 X AE F/S	4 X MTD
2 X SSAE B/R	1 X BLUE PRINTER
1 X SSAE E/M	1 X DAFTRY
2 X SAE B/R	1 X GEST OP
2 X SAE E/M	6 X PEON
1 X D/MAN CL- A	3 X CHOWKIDER
1 X SUPVR F/S GDE-I	
1 X D/MAN CL- B	

GE (ARMY) SAVAR	
1 X XEN B/R / MAJOR	2 X SUPVR F/S GDE-II
1 X AXEN E/M / CAPTAIN	1 X D/MAN CL- C
1 X AE-B/R (SDO)	4 X STOREMAN
4 X SSAE B/R	13 X OA
3 X SSAE E/M	4 X MTD
9 X SAE B/R	1 X BLUE PRINTER
7 X SAE E/M	1 X DAFTRY
1 X SUPVR F/S GDE-I	4 X PEON
1 X D/MAN CL- B	3 X CHOWKIDER
5 X UDA	

66

GE (ARMY) JESSORE	
1 X XEN B/R / MAJOR	2 X SUPVR F/S GDE-II
1 X AXEN B/R / CAPTAIN	1 X D/MAN CL- C
1 X AE-B/R (SDO)	4 X STOREMAN
4 X SSAE B/R	13 X OA
3 X SSAE E/M	4 X MTD
9 X SAE B/R	1 X BLUE PRINTER
7 X SAE E/M	1 X DAFTRY
1 X SUPVR F/S GDE-I	4 X PEON
1 X D/MAN CL- B	3 X CHOWKIDER
5 X UDA	

66

AGE (ARMY) MOMENSHAH	
1 X AXEN B/R / CAPTAIN	3 X STOREMAN
1 X AE-B/R (SDO)	6 X OA
3 X SSAE B/R	2 X MTD
1 X SSAE E/M	1 X BLUE PRINTER
4 X SAE B/R	1 X DAFTRY
4 X SAE E/M	2 X PEON
1 X SUPVR F/S GDE-I	3 X CHOWKIDER
1 X D/MAN CL- B	
4 X UDA	

38

GE (ARMY) GHATAIL	
1 X XEN B/R / MAJOR	2 X SUPVR F/S GDE-II
1 X AXEN B/R / CAPTAIN	1 X D/MAN CL- C
1 X AE-B/R (SDO)	4 X STOREMAN
4 X SSAE B/R	12 X OA
2 X SSAE E/M	3 X MTD
9 X SAE B/R	1 X BLUE PRINTER
5 X SAE E/M	1 X DAFTRY
1 X SUPVR F/S GDE-I	4 X PEON
1 X D/MAN CL- B	3 X CHOWKIDER
5 X UDA	

61

GE (ARMY) BOF GAZIPUR	
1 X XEN B/R / MAJOR	1 X D/MAN CL- C
1 X AXEN B/R / CAPTAIN	4 X STOREMAN
2 X SSAE B/R	10 X OA
2 X SSAE E/M	4 X MTD
5 X SAE B/R	1 X BLUE PRINTER
5 X SAE E/M	1 X DAFTRY
1 X SUPVR F/S GDE-I	4 X PEON
1 X D/MAN CL- B	4 X CHOWKIDER
4 X UDA	2 X SWEEPER
1 X SUPVR F/S GDE-II	

54

AGE (ARMY) RAJENDRAPUR	
1 X AXEN B/R / CAPTAIN	4 X STOREMAN
1 X AE-B/R (SDO)	9 X OA
3 X SSAE B/R	3 X MTD
1 X SSAE E/M	1 X BLUE PRINTER
6 X SAE B/R	1 X DAFTRY
4 X SAE E/M	2 X PEON
1 X SUPVR F/S GDE-I	3 X CHOWKIDER
1 X D/MAN CL- B	
5 X UDA	

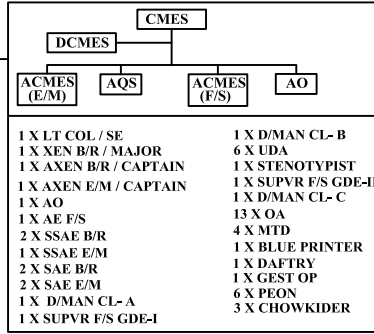
46

AGE (ARMY) JAHANABAD	
1 X AXEN B/R / CAPTAIN	3 X STOREMAN
1 X AE-B/R (SDO)	6 X OA
3 X SSAE B/R	2 X MTD
1 X SSAE E/M	1 X BLUE PRINTER
4 X SAE B/R	1 X DAFTRY
4 X SAE E/M	2 X PEON
1 X SUPVR F/S GDE-I	3 X CHOWKIDER
1 X D/MAN CL- B	
4 X UDA	

38

CMES (ARMY) BOGRA

54



GE (ARMY) BOGRA

66

1 X XEN B/R / MAJOR	5 X UDA
1 X AXEN B/R / CAPTAIN	2 X SUPVR F/S GDE-II
1 X AE-B/R (SDO)	1 X D/MAN CL- C
4 X SSAE B/R	4 X STOREMAN
3 X SSAE E/M	13 X OA
9 X SAE B/R	4 X MTD
7 X SAE E/M	1 X BLUE PRINTER
1 X SUPVR F/S GDE-I	1 X DAFTRY
1 X D/MAN CL- B	4 X PEON
	3 X CHOWKIDER

GE (ARMY) RANGPUR

61

1 X XEN B/R / MAJOR	2 X SUPVR F/S GDE-II
1 X AXEN B/R / CAPTAIN	1 X D/MAN CL- C
1 X AE-B/R (SDO)	4 X STOREMAN
4 X SSAE B/R	12 X OA
2 X SSAE E/M	3 X MTD
9 X SAE B/R	1 X BLUE PRINTER
5 X SAE E/M	1 X DAFTRY
1 X SUPVR F/S GDE-I	4 X PEON
1 X D/MAN CL- B	3 X CHOWKIDER
5 X UDA	

GE (ARMY) SAIDPUR

61

1 X XEN B/R / MAJOR	2 X SUPVR F/S GDE-II
1 X AXEN B/R / CAPTAIN	1 X D/MAN CL- C
1 X AE-B/R (SDO)	4 X STOREMAN
4 X SSAE B/R	12 X OA
2 X SSAE E/M	3 X MTD
9 X SAE B/R	1 X BLUE PRINTER
5 X SAE E/M	1 X DAFTRY
1 X SUPVR F/S GDE-I	4 X PEON
1 X D/MAN CL- B	3 X CHOWKIDER
5 X UDA	

AGE (ARMY) RAJSHAHI

38

1 X AXEN B/R / CAPTAIN	4 X UDA
1 X AE-B/R (SDO)	3 X STOREMAN
3 X SSAE B/R	6 X OA
1 X SSAE E/M	2 X MTD
4 X SAE B/R	1 X BLUE PRINTER
4 X SAE E/M	1 X DAFTRY
1 X SUPVR F/S GDE-I	2 X PEON
1 X D/MAN CL- B	3 X CHOWKIDER

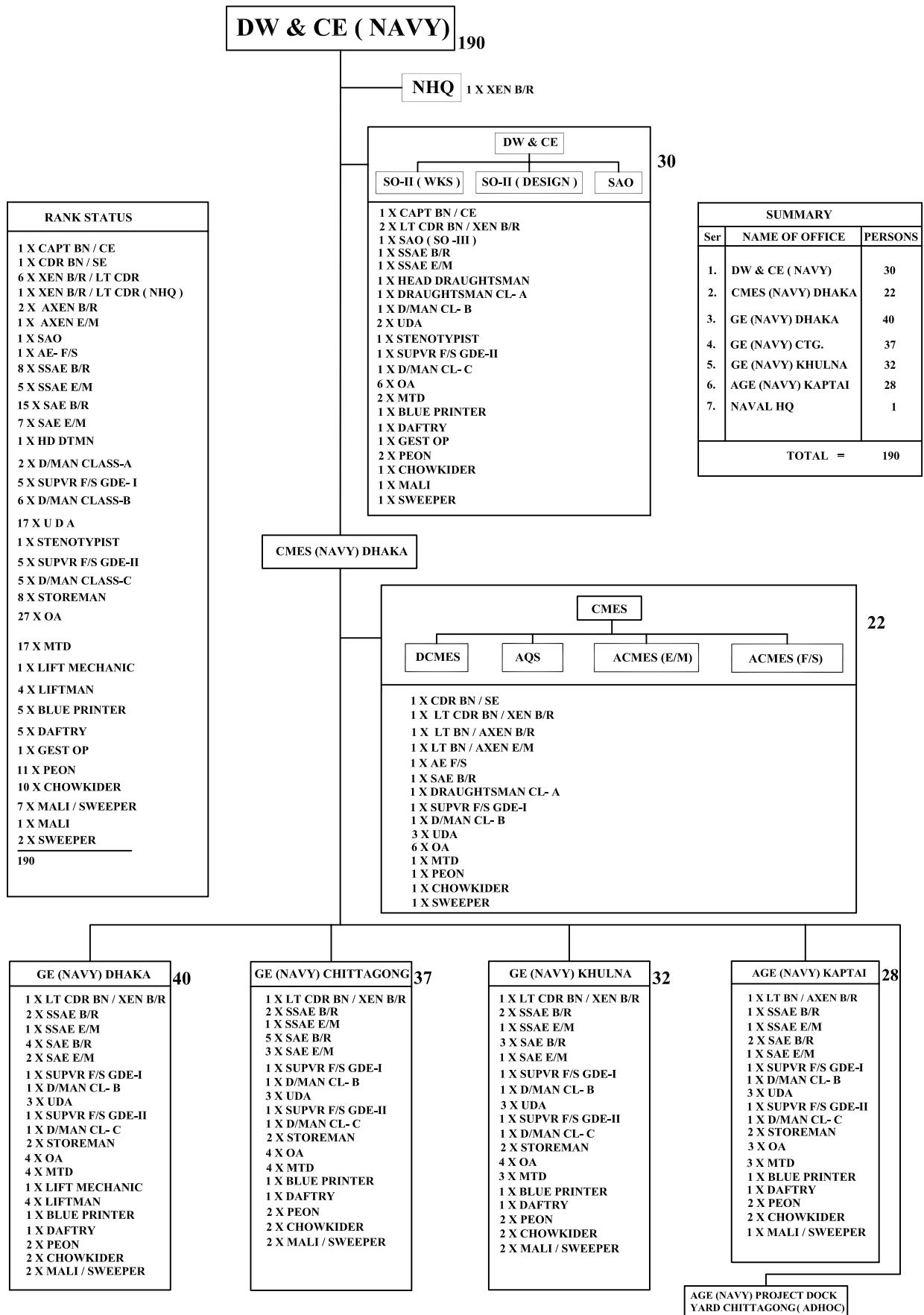
AGE (ARMY) QUADIRABAD

38

1 X AXEN B/R / CAPTAIN	4 X UDA
1 X AE-B/R (SDO)	3 X STOREMAN
3 X SSAE B/R	6 X OA
1 X SSAE E/M	2 X MTD
4 X SAE B/R	1 X BLUE PRINTER
4 X SAE E/M	1 X DAFTRY
1 X SUPVR F/S GDE-I	2 X PEON
1 X D/MAN CL- B	3 X CHOWKIDER

AGE (ARMY) PARBATIPUR
(ADHOC)

MES ORGANIZATION (NAVY)

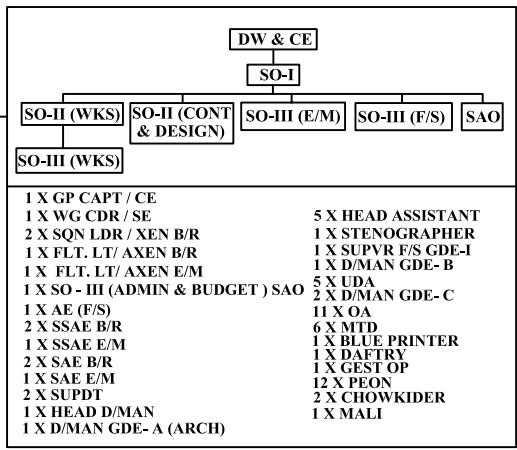


MES ORGANIZATION (AIR)

DW & CE (AIR) 352

AIR HQ 1 X XEN B/R | 2
1 X SSAE E/M

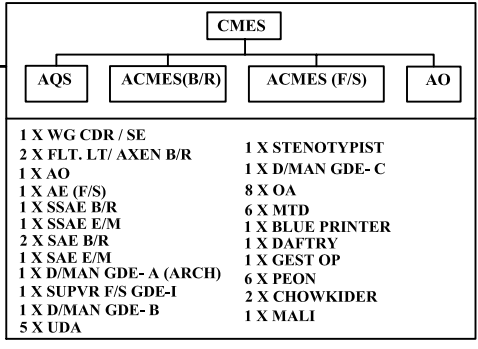
RANK STATUS
1 X GP CAPTAIN / CE
2 X WG. CDR/ SE
6 X SQN LDR / XEN B/R
1 X SQN LDR / XEN B/R (Air HQ)
10 X FLT LT / AXEN B/R
1 X FLT LT / AXEN E/M
1 X AE B/R
1 X SAO
1 X AO
2 X AE F/S
18 X SSAE B/R
12 X SSAE E/M
1 X SSAE E/M (Air HQ)
25 X SAE B/R
15 XSAE E/M
2 X SUPDT
1 X HD DTMN
2 X D/MAN GDE-A (ARCH)
5 X HD ASST
1 X STENOGRAPHER
7 X SUPVR F/S GDE- I
6 X D/MAN GDE- B
34 X U D A
1 X STENOTYPIST
5 X SUPVR F/S GDE-II
8 X D/MAN GDE-C
13 X STOREMAN
58 X OA
44 X MTD
6 X BLUE PRINTER
6 X DAFTRY
6 X GEST OP
30 X PEON
18 X CHOWKIDER
2 X MALI
352



68

SUMMARY		
Ser	NAME OF OFFICE	PERSONS
1.	DW & CE (AIR)	68
2.	CMES (AIR) KURMITOLA	46
3.	GE (AIR) TEJGAON	44
4.	GE (AIR) KURMITOLA	46
5.	GE (AIR) JESSORE	43
6.	GE (AIR) CTG.	44
7.	AGE (AIR) AIR HQ UNIT	31
8.	WK SHOP MES (AIR)	13
9.	ESD MES (AIR)	15
10.	AIR HQ	2
TOTAL =		352

CMES (AIR) KURMITOLA 46



GE (AIR TEJGAON) 44

1 X SQN LDR / XEN B/R
1 X FLT. LT/ AXEN B/R
3 X SSAE B/R
2 X SSAE E/M
4 X SAE B/R
2 X SAE E/M
1 X SUPVR F/S GDE-I
1 X D/MAN GDE- B
4 X UDA
1 X SUPVR F/S GDE-II
1 X D/MAN GDE- C
2 X STOREMAN
7 X OA
7 X MTD
1 X BLUE PRINTER
1 X DAFTRY
1 X GEST OP
2 X PEON
2 X CHOWKIDER

GE (AIR) KURMITOLA 46

1 X SQN LDR / XEN B/R
1 X FLT. LT/ AXEN B/R
4 X SSAE B/R
2 X SSAE E/M
6 X SAE B/R
2 X SAE E/M
1 X SUPVR F/S GDE-I
1 X D/MAN GDE- B
4 X UDA
1 X SUPVR F/S GDE-II
1 X D/MAN GDE- C
2 X STOREMAN
7 X OA
1 X BLUE PRINTER
5 X MTD
1 X DAFTRY
1 X GEST OP
3 X PEON
2 X CHOWKIDER

GE (AIR) JESSORE 43

1 X SQN LDR / XEN B/R
1 X FLT. LT/ AXEN B/R
3 X SSAE B/R
2 X SSAE E/M
4 X SAE B/R
2 X SAE E/M
1 X SUPVR F/S GDE-I
1 X D/MAN GDE- B
4 X UDA
1 X SUPVR F/S GDE-II
1 X D/MAN GDE- C
2 X STOREMAN
7 X OA
6 X MTD
1 X BLUE PRINTER
1 X DAFTRY
1 X GEST OP
2 X PEON
2 X CHOWKIDER

GE (AIR) CHITTAGONG 44

1 X SQN LDR / XEN B/R
1 X FLT. LT/ AXEN B/R
3 X SSAE B/R
2 X SSAE E/M
4 X SAE B/R
2 X SAE E/M
1 X SUPVR F/S GDE-I
1 X D/MAN GDE- B
4 X UDA
1 X SUPVR F/S GDE-II
1 X D/MAN GDE- C
2 X STOREMAN
7 X OA
7 X MTD
1 X BLUE PRINTER
1 X DAFTRY
1 X GEST OP
2 X PEON
2 X CHOWKIDER

AGE (AIR) AIR HQ UNIT 31

1 X FLT. LT/ AXEN B/R
1 X AE B/R
2 X SSAE B/R
1 X SSAE E/M
3 X SAE B/R
2 X SAE E/M
4 X UDA
1 X SUPVR F/S GDE-II
1 X D/MAN GDE- C
2 X STOREMAN
7 X OA
3 X MTD
1 X PEON
2 X CHOWKIDER

WK SHOP MES (AIR) 13

1 X FLT. LT/ AXEN B/R
1 X SSAE E/M
2 X SAE E/M
2 X UDA
2 X OA
2 X MTD
1 X PEON
2 X CHOWKIDER

ESD MES (AIR) 15

1 X FLT. LT/ AXEN B/R
1 X SAE E/M
1 X SUPVR F/S GDE-I
3 X STOREMAN
2 X OA
2 X MTD
1 X PEON
2 X CHOWKIDER

